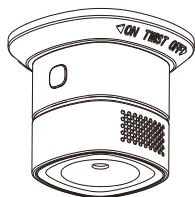
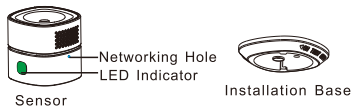


## M414-7EVer1.0



\*Please read the user manual carefully before operation.  
The guide picture is for reference only. please in kind prevail

This product is a smart carbon monoxide sensor, adopts super low power consumption Zigbee wireless networking technology, used for detecting carbon monoxide. Sensor adopts high performance electrochemical sensor, support sound and flash alarm, it has high stability, super low power consumption, little sensitivity drift and many other features. Free installation design, support instant bonding.



1

1. Working Voltage: DC3V (CR123A Lithium Battery)
2. Static Current:  $\leq 20\mu\text{A}$
3. Alarm Current:  $\leq 60\text{mA}$
4. Alarm Sound: 85dB/1m
5. Alarm Sensitivity: 30ppm 120mins alarm  
50ppm 60-90mins alarm  
100ppm 10-40mins alarm  
300ppm 3mins alarm
6. Networking: ZigBee Ad-Hoc Networking
7. Wireless Networking Distance:  $\geq 70\text{m}$  (open area)
8. Working Temperature:  $-10^{\circ}\text{C} \sim +50^{\circ}\text{C}$  ;
9. Environment Humidity:  $\leq 95\%\text{RH}$
10. Dimension: 54\*54\*45mm

2

1. This product can not be used for detecting natural gas (methane), propane, butane and other combustible gas.
2. Clean once a month, users may use household vacuum cleaner and soft brush when cleaning.
3. Do not use cleanser or solvent type sensors, please avoid spraying air freshener, hair spray, oil paint or other aerosol near sensors.
4. Effective working life span is 5 years, suggest replace every 5 years no matter there is fault or not. (Battery life span is 3 years).
5. Please be attention when alarm happens. Shut-off valves immediately, opening the window, make sure indoor airiness. Besides using sensors correctly, users should strengthen the consciousness of fire protection.

3

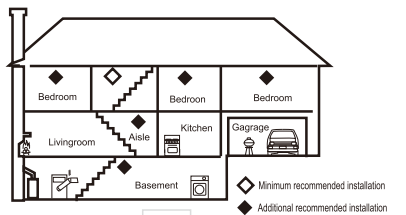
1. Install the sensor in bedroom and living area or anywhere CO may leak, make sure each sleeping area can hear sound alarm when choose installation position.
2. Avoid suppressing or falling down sensors, keep sensors away from humid, high voltage, strong magnetic and children.
3. Do not suggest install sensors in garage, kitchen, boiler and places where sensor may false alarm. Do not install in dirty, dusty or greasy places, oily, dust or household chemicals may damage internal sensor, and make sensor can not work normally.
4. Sensors can support wall mounted or placing on the table, household and travel essential.

4

## Installation Drawing

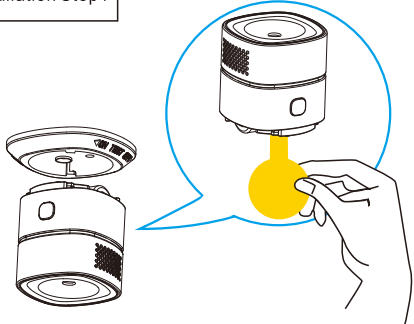
To increase safety factors in single-layer house, suggest to install at least a sensor in each bedroom and install a sensor at 6m from chimney and gas fixture.

To increase safety factors in multi-layer house, suggest to install at least a sensor in each bedroom, install at least one sensor in basement. Please install a sensor at 6m from chimney and gas fixture.



5

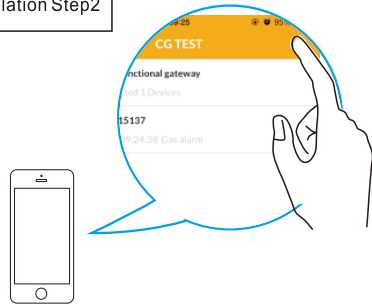
## Installation Step1



- Anticlockwise rotating the bracket out from the installation base, then remove the battery insulating strip to make detector on power.

6

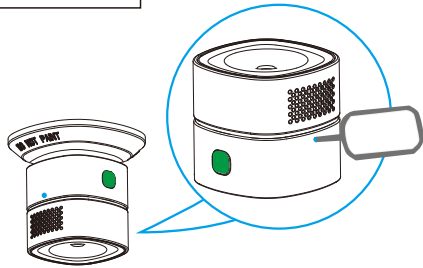
## Installation Step2



- Click “Add Device” on the APP interface, and enter the networking mode.

7

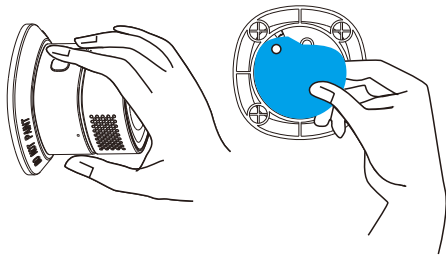
### Installation Step3



- According to APP prompt, press networking hole for 2 seconds till green LED flash quickly, APP shows slip, green LED keep on for 3 seconds, networking success. (Press the networking button for 5 seconds to disconnect the network, after the green light flashes slowly for 3 seconds, which indicates network is disconnected success).

8

## Installation Step4



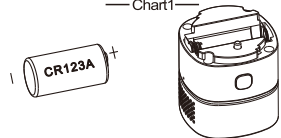
- Screw the sensor into bracket, please remove the double sided adhesive membrane on the installation base, and stick on the wall.

9

## Status and battery replacement

Status	LED Indicator	Alarm
Test	Red LED flash 4 times in 10 seconds	"Di" four times
Warm up	LED flash alternately in three colors and then go out	"Di" one time when power on
Fault	Yellow LED flash twice	"Di" twice in 10 seconds
Low Power	Yellow LED flash one time	"Di" one time every 10 seconds
Super Low Power	Yellow LED keeps on	"Di" one time every 10 seconds
Usage Expiration Date	Yellow LED flash twice	"Di" twice every 10 seconds

— Chart1.



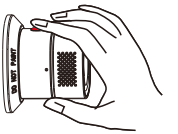
- Please replace battery correctly, following the battery positive and negative electrode.

10

## Troubleshooting and test

Please take following advices for reference if sensors can not work normally

1. Replace battery in time, if voltage too low and reach effective life span. (Check table 1 for status reference)
2. Please clean sensor if the fault resulted from dust or oil stain ( Check table 1 for status reference).
3. Make sure sensors screw into the base correctly.



- Press test button on the product for 3 seconds, shows in above picture, till alarm happens ( check table 1 for status reference). Suggest test sensor at least once a week. Please pay attention once alarm happens.

11