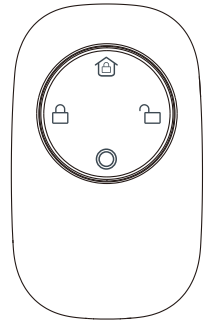


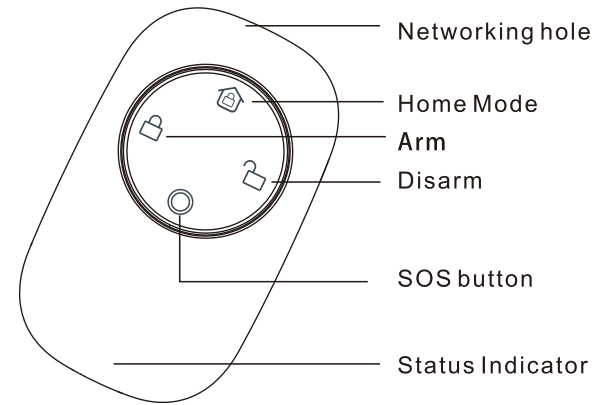
Smart remote controller User Manual

M414-11Ever1.0



*Please read the user manual carefully before operation.
The guide picture is for reference only, please in kind prevail.

Product Details

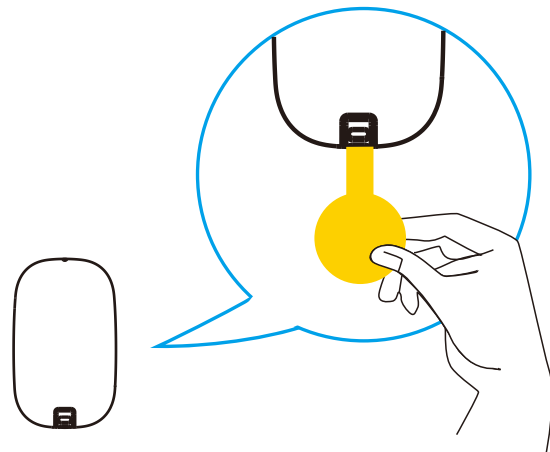


This is a smart remote controller, which can take home protection when going out. It has small fashionable design. Adopts super low power consumption ZigBee wireless networking design, ZHA standard protocol, support timely reporting and reminding if low power of battery, makes a longer battery life span.

Product Introduction

Specification

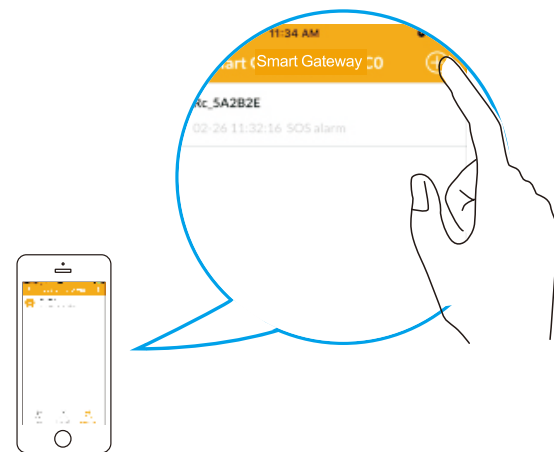
1. Working Voltage: DC3V (1* CR2032 button battery)
2. Standby Current : $\leq 3\mu\text{A}$
3. Alarm Current : $\leq 30\text{mA}$
4. Networking Mode: ZigBee Ad-Hoc Networking
5. Wireless Networking Distance: $\leq 100\text{m}$ (open area)
6. Working Environment : $-10^{\circ}\text{C} \sim +50^{\circ}\text{C}$;
7. Environment Humidity : $\leq 95\%\text{RH}$
8. Dimension : $57.5*34.5*13\text{mm}$



- Remove battery insulation film to power on

1

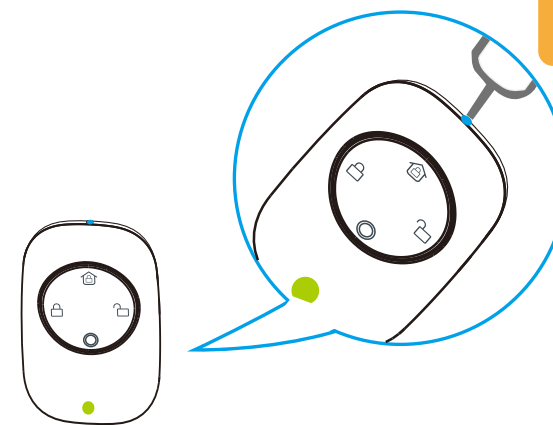
2



- Open app and click "Add" button to enter networking mode.

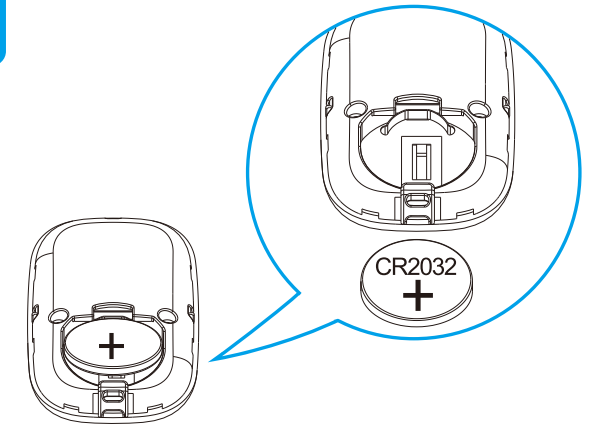
3

4



- According to APP prompt, press the button for 2 seconds, green LED flash quickly, APP Interface prompted, networking success. (Press networking hole for 5 seconds if any changes for internet, green LED flash slowly for 3 seconds, exit network successfully.

Battery Replacement



*Please change battery correctly based on the positive and negative terminals of the battery. Pay attention to the environment protection, please deal with the waste battery correctly.